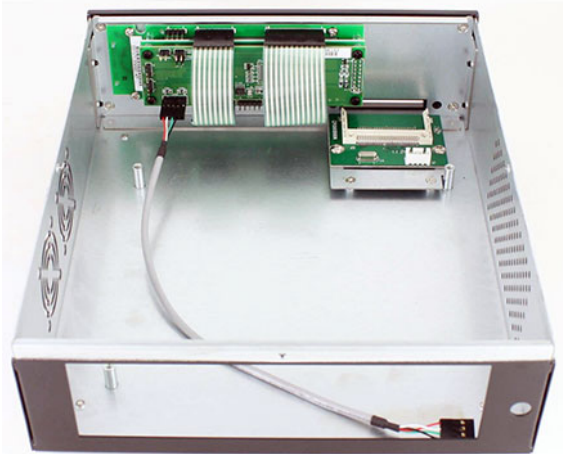




189.95 EUR

incl. 19% VAT, plus shipping



- Up to two 2.5" HDD/SSD drives
- Intelligent USB display with 20 columns and 2 rows and 8x5 dots character size included
- Bootable (USB) Compact-Flash
- PWR button and LED
- Works with any picoPSU (not included) or mainboard with onboard power supply
- Size 25cm (w) x 6.8 cm x 23,7cm

M400-LCD is the perfect platform choice for your appliance (eg. firewall, controller, computing node, SOHO, industrial). The front LCD-modul which comes with many buttons can be programmed individually (Linux/Windows SDK) and is perfect for showing system- and application values and allows operating without connected monitor.

The M400-LCD-Enclosure fits any type of mini-ITX board with standard back I/O shield. The M400-LCD-Enclosure will work with up to two SATA 2.5" disk drives.

The M400-LCD-Enclosure is compatible with an entire range of DC-DC picoPSU power supplies, allowing system designers to pick the right PSU for their application.

The M400-LCD-Enclosure has a front bootable Compact Flash adapter, making this enclosure perfect for systems that boot from flash (Compact Flash).

Starting with 50 units order qty. you can choose custom color for the enclosure and you can get the enclosure front without CF reader.

Motherboard support	Mini-ITX
Body material	Steel / Aluminium
External bays	1x Compact Flash
Internal bays	2x 2.5" HDD/SSD
Dimensions	250(W) x 237(D) x 68(H)mm
PSU support	PicoPSU-series / M3-ATX(-HV) or mainboard onboard power supply
Front LCD	picoLCD 20x2 (Linux/Windows SDK available)
Weight	1.8kg
Cooling system	2x 40x40x10mm fan (optional)